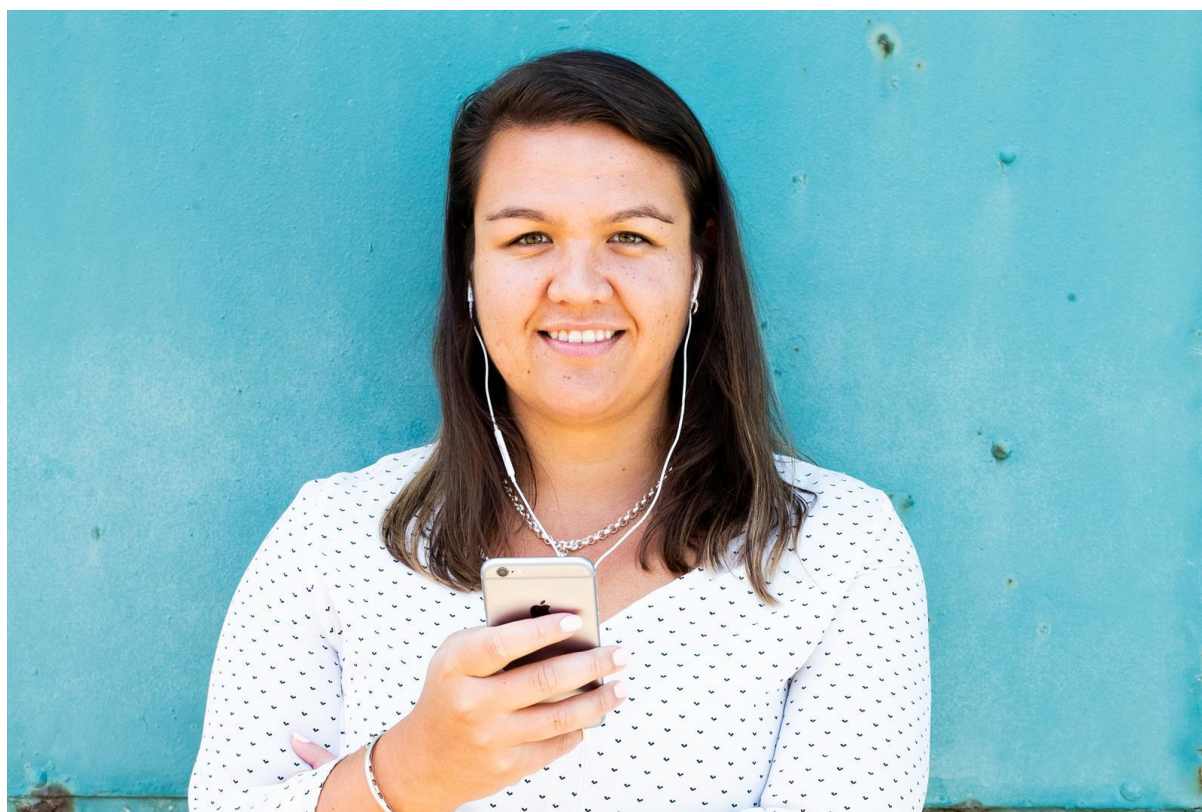


# Marae Digital Connectivity



In February 2019, Prime Minister Jacinda Ardern announced that the Government will invest \$21 million to ensure even more New Zealanders in the regions can access modern and reliable digital services in their community. This builds on \$80 million in funding already announced from the Provincial Growth Fund (PGF).

The PM said that the Marae Digital Connectivity initiative will support whānau, hapū and iwi to achieve their goals and aspirations including social inclusion, cultural connections and participation in the wider community. Marae Digital Connectivity may also offer alternative ways to access health, social and education services.

Other benefits of Marae Digital Connectivity include:

- an enhanced ability for Māori to access key services and skills necessary for improved economic participation
- alternative ways for rangatahi and whānau to learn the skills for a modern workforce
- increased productivity of local and emerging business ventures
- the ability to leverage tourism visitations for economic growth
- connecting with whānau living out of the region and overseas

This opportunity is available for rural Marae in Te Tai Tokerau; Waikato-Waiariki; Ikaroa-Rāwhiti and **Te Tai Hauāuru**. The initiative is being jointly administered by MBIE, TPK, the Provincial Development Unit and Crown Infrastructure Partners (CIP) who will implement the project.

CIP has now released a Request for Proposals for the delivery of the project. Providers are invited to prepare and submit proposals by 15 October 2019. For more information, contact Te Puni Kōkiri.